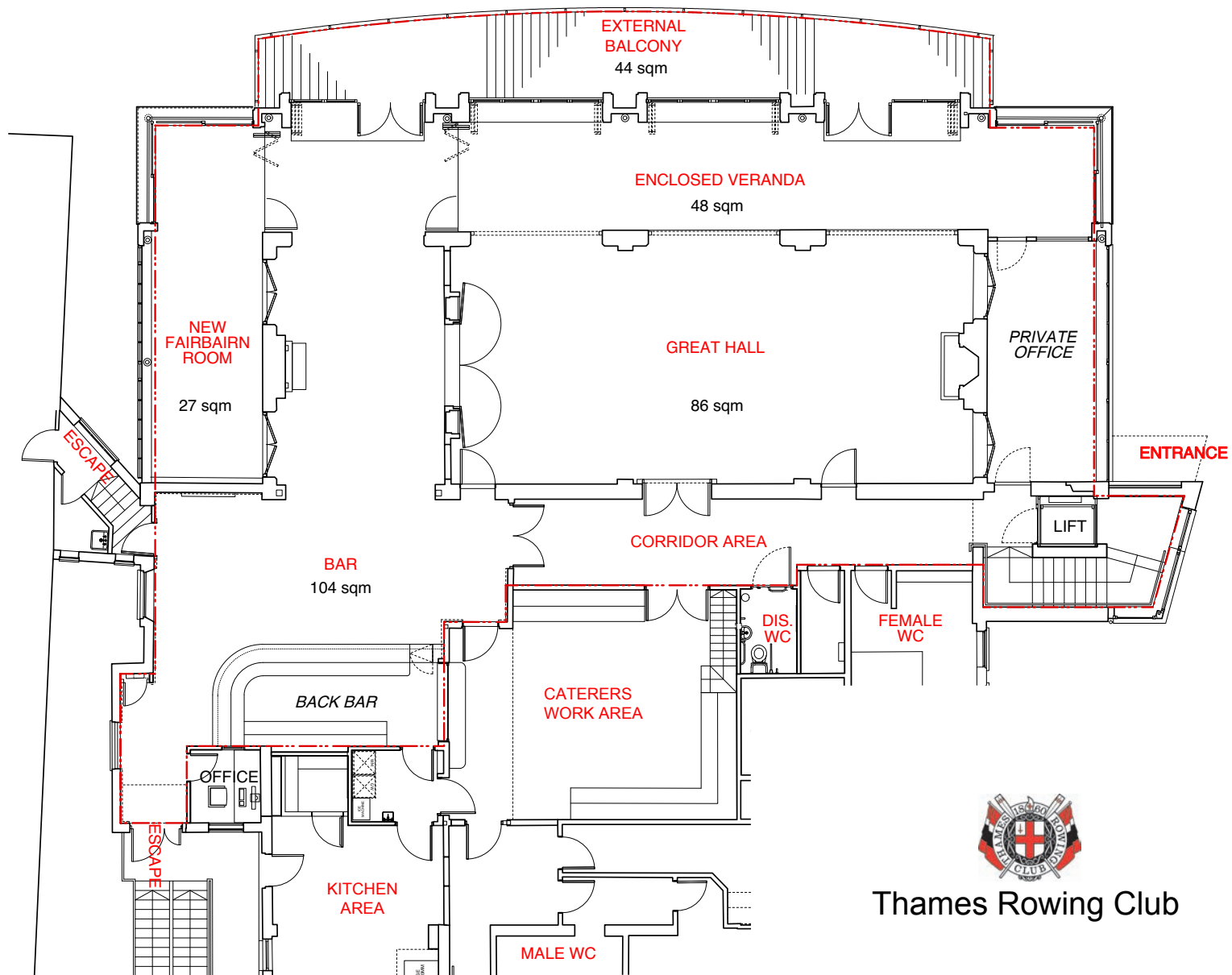




Thames
Rowing Club

*"a perfect place
on the river"*

*weddings | parties | conferences
dinners | seminars | meetings | events*



Thames Rowing Club

The Club

Welcome to Thames Rowing Club. We are one of the country's oldest and most successful amateur rowing clubs. The club was formed in 1860 for the purpose of "organised pleasure or exercise rowing", although the club's focus soon shifted to competition. Thames' rowers and scullers have at some time in its history won nearly every national and international prize of note, and the Club has led in the development of the sport of rowing.



The Victorian clubhouse now boasts an impressive new entrance, with a disabled lift leading directly onto the function hallway. This leads in turn to three distinct areas of the multi-functional, flexible entertainment space within the club.



The Great Hall and the Bar have doors and windows which open directly onto our large private terrace overlooking the Thames.



We are licensed for up to 400 people and your guests will find ample space to socialise and mix. The Bar and Great Hall can be opened up to provide a very flexible space which is ideal for a variety of uses and configurations from small meetings and intimate dinner parties to weddings and conferences.

Located on the Embankment at Puney, the club is easily accessed from across London, by car, Underground, train and river boat.

The Great Hall

The Great Hall is the largest room in the clubhouse, measuring 6.5 metres by 12.5 metres and with a ceiling height of 6 metres. The 12 metre wall of glass windows and doors offers unparalleled views upstream towards Hammersmith and downstream to Putney Bridge, the historic start of the Boat Race. The walls are adorned with portraits, Henley medals and memorabilia of triumphs present and past. The Hall will seat up to 150 people dining or 350 people standing and is an ideal setting for weddings and banquets (with live music if required).

The Bar



The purpose-built bar area will accommodate around 150 people in comfortable surroundings and with spectacular views over the Thames. Thames Rowing Club is responsible for staffing the bar. There will be at least two people serving behind the bar for your party, increasing to three or more people for numbers of 100 and over. The bar is fully

licensed and stocks an excellent range of beers, real ales, wines and spirits both on tap and in bottles. We have our own excellent wine list, but you are of course welcome to provide your own beverages subject to agreed corkage charges. The bar licence runs to midnight at weekends; however, we can apply to extend this to 1am, if requested a minimum of 2 weeks in advance.

The Fairbairn Room

This room is an intimate quiet space adjacent to the Great Hall and off the Bar area, with its own wonderful view of the Thames. It seats 20 to 30 people which lends itself to smaller events.

Furniture & Event Decoration

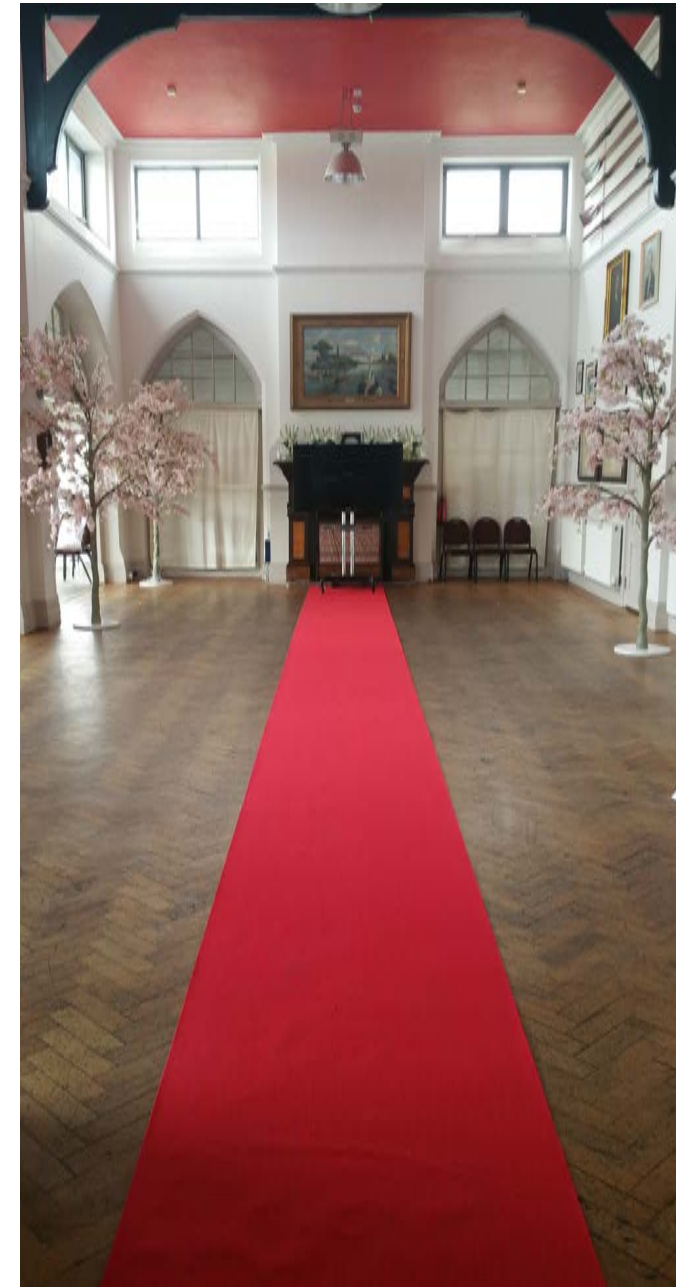


The room hire includes a supply of tables and chairs. We can also supply all the table linen. You are welcome to decorate the rooms but, since the boathouse is an historic building in a conservation area, fixing onto walls or beams must be approved by the House Manager beforehand. In addition, given the building's timber structure, we do ask that any candles only be used with sturdy and approved holders.



Wedding Ceremony & Licence

Thames Rowing Club holds a wedding licence which can be used in conjunction with the reception or for the ceremony alone.



Catering

At present we have four house caterers to help make it a special day. However you can also hire our kitchen and bring your own caterers.



Caterers

Shona Pollock

07767 763448 | www.shonapollock.co.uk

The Travelling Chefs

07974 023422 | www.thetravellingchefs.co.uk

Bubblefood

020 7703 2653 | www.bubblefood.co.uk

Fab Caterers

07769 940674 | www.fabcaterers.co.uk



Getting here

The club is easily accessed from across London.

By car, Underground [Putney Bridge, District Line], SW Trains [Putney from Waterloo], River Boat & Thames Clipper from the city to Putney Bridge and also private vessel hire.



I hope you have found this information useful. I'm sure you will have more questions and will wish to discuss the venue and your function. If so, please give me a call, and we can arrange a convenient time for you to visit the club and discuss your requirements.

Mike Grattan
House Manager

Thames Rowing Club
Putney Embankment | London, SW15 1LB
07760 614907 | house@thamesrc.co.uk
www.thamesrc.co.uk



Adaptable Function Space



‘a perfect place on the river’

*Wedding Receptions
Formal Dinners
Private Parties
Intimate Dinners*

*Charity Events
Away Days
Art Exhibitions
Presentations*

*Lectures Seminars
Work Shops
Conferences
Board Meetings*

Thames Rowing Club | Putney Embankment London SW15 1LB | house@thamesrc.co.uk